

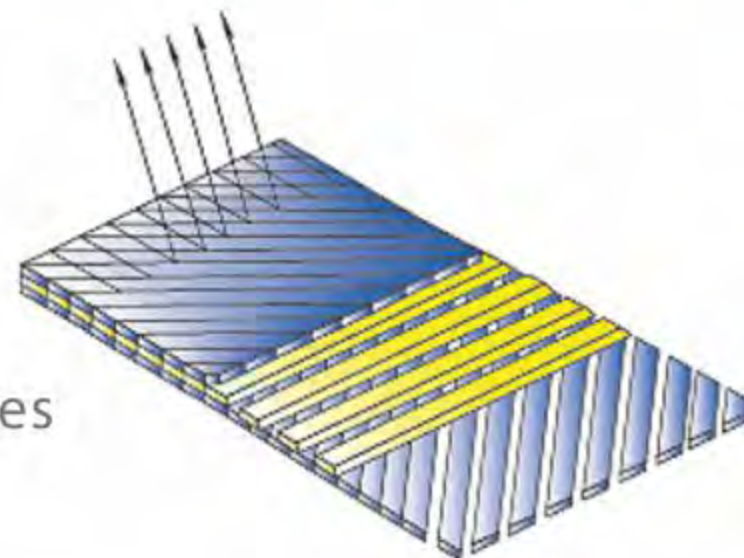
7

Tri-axial Fabric Series

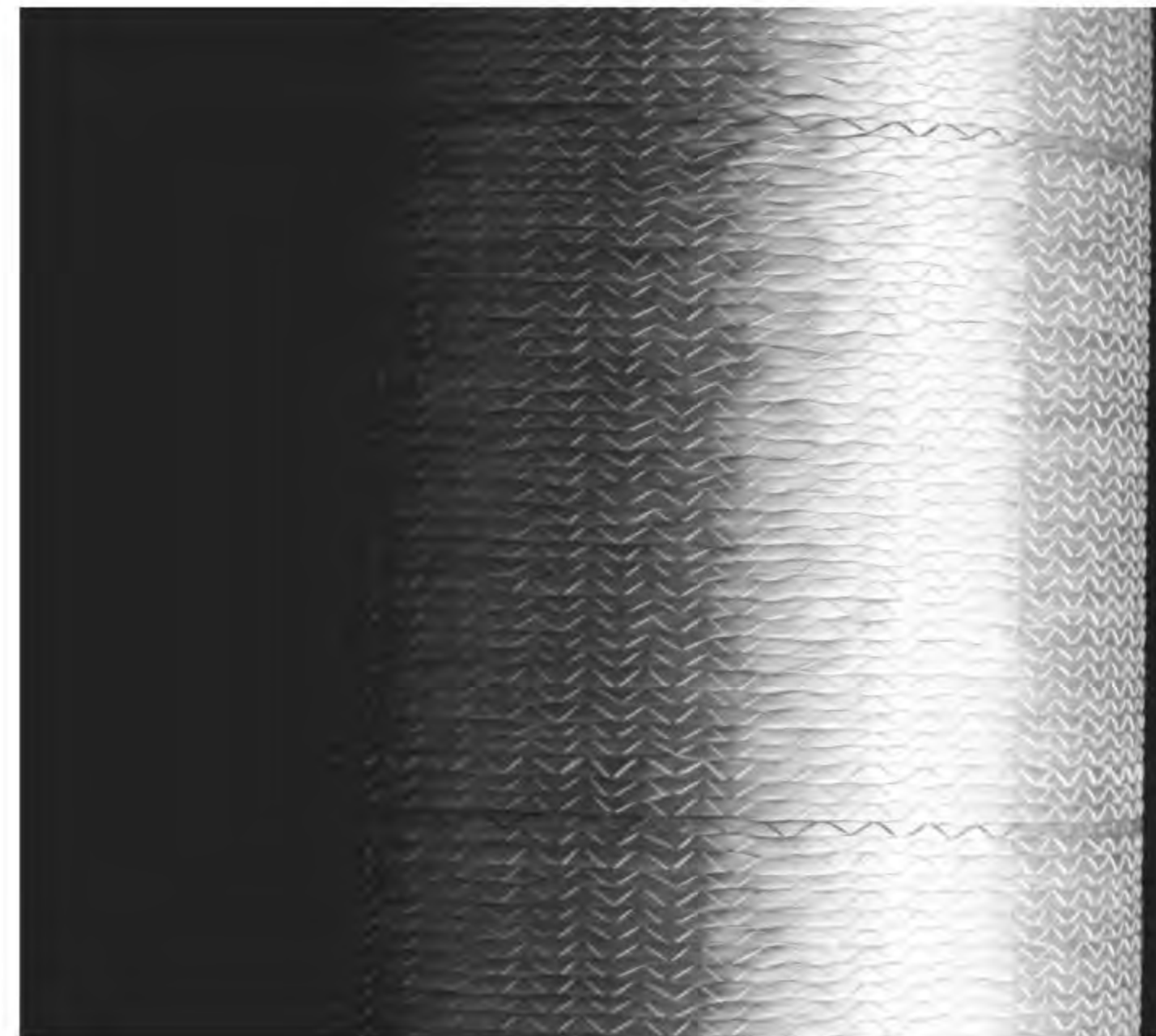
Tri-axial Fabric Series

The general direction of this product series are $0^\circ/+45^\circ/-45^\circ$ and $+45^\circ/90^\circ/-45^\circ$, also the directions can be randomly changed from $\pm 30^\circ$ to $\pm 80^\circ$. The fabric weight is $450\text{g/m}^2 \sim 2000\text{g/m}^2$, and chop mat with $50 \sim 500\text{g/m}^2$ or non-woven fabric can be stitched under the layers. The maximum width is up to 101 inches.

The main usages are wind blades, boats, transportation and sport goods.



"TTX" Series



E-TLX Triaxial Series

Main Products	Overall Density (g/m ²)	0° layer (g/m ²)	+45° layer (g/m ²)	-45° layer (g/m ²)	Chopped Strand (g/m ²)	Polyester Yarn Density(g/m ²)
E-TLX600	600.65	283.46	155.92	155.92	/	5.35
E-TLX750	750.45	141.73	300.61	300.61	/	7.50
E-TLX1180	1189.82	576.00	300.61	300.61	/	12.60
E-TLX1850	1856.86	944.88	450.99	450.99	/	10.00
TLX1215	1220.02	708.00	250.51	250.51	/	11.00
E-TLXM1800/225	2039.04	574.80	614.12	614.12	225.00	11.00

E-TTX Triaxial Series

Main Products	Overall Density (g/m ²)	0° layer (g/m ²)	+45° layer (g/m ²)	-45° layer (g/m ²)	Chopped Strand (g/m ²)	Polyester Yarn Density(g/m ²)
E-TTX700	707.23	250.55	250.55	220.78	/	5.35
E-TTX800	813.01	400.88	400.88	5.90	/	5.35
E-TTX1200	1176.15	300.61	300.61	566.93	/	8.00
E-TTXM1460/101	1566.37	424.26	424.26	607.95	101.55	8.35



*does not apply to all styles.